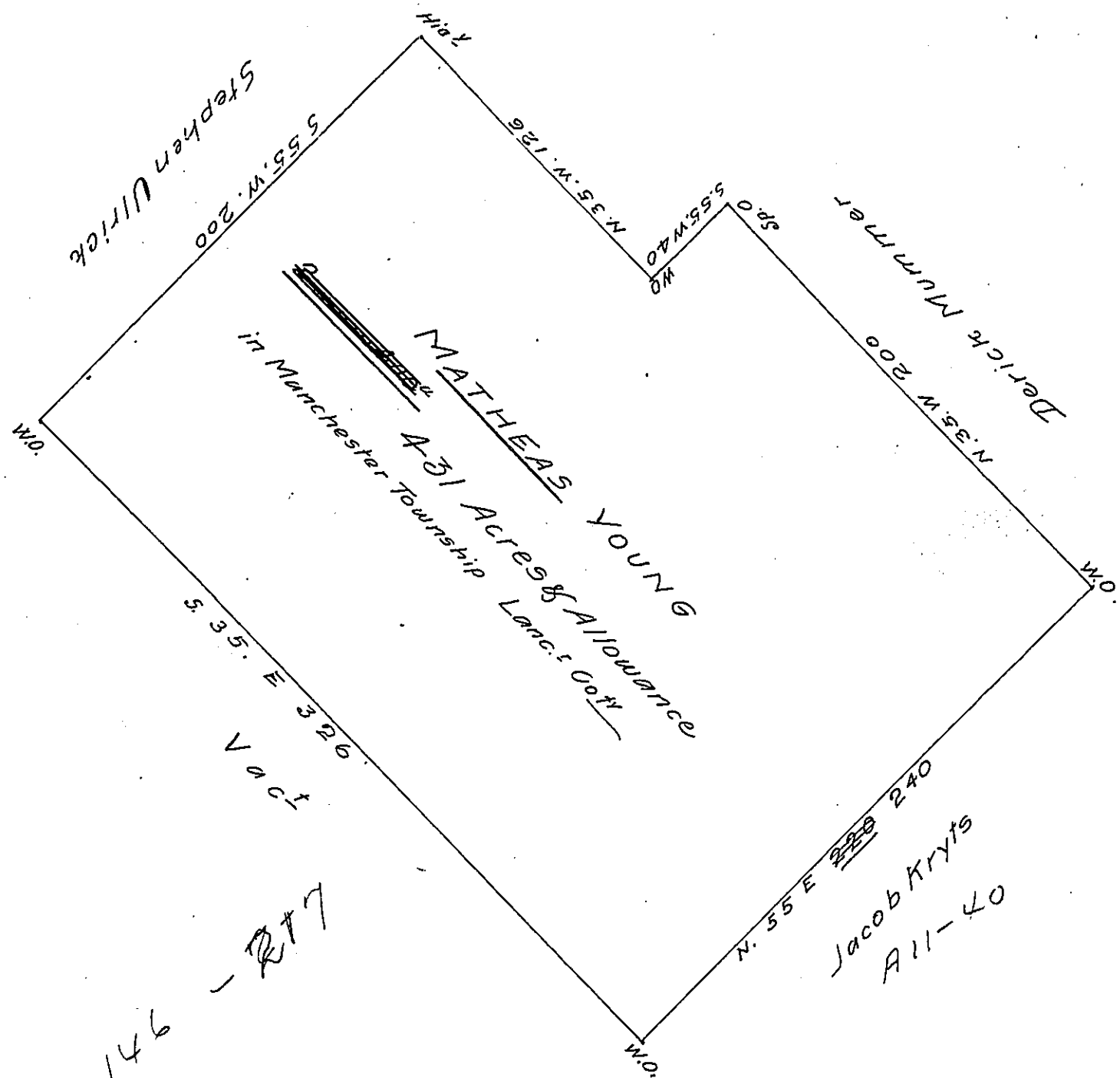


FORM NO 1.



A Draught of Mathias Youngs land Situate in Manchester Town-  
 ship Lancaster County containing 4.31<sup>acs</sup> & the usual allowance of  
 Six p Cent for Roads &c. By Virtue of the Proprietaries Warr<sup>t</sup> bea-  
 ring date the 3<sup>d</sup> May 1743 Survey'd the 10<sup>th</sup> of the same month

Thos: Cookson

To M<sup>r</sup>: W<sup>m</sup>: Parsons

Surve Gen<sup>l</sup>.

IN TESTIMONY that the above is a copy of the original remaining on file in  
 the Department of Internal Affairs of Pennsylvania, made  
 conformably to an Act of Assembly approved the 16th day of  
 February, 1833, I have hereunto set my Hand and caused  
 the Seal of said Department to be affixed at Harrisburg,  
 this twenty-second day of July 1907

Henry Howell  
 Secretary of Internal Affairs.